

INSTALLATION INSTRUCTIONS
MODEL 0351 ADJUSTABLE HEADER TRUCK DOCK SEAL

SUPER SEAL MFG. LTD. WILL NOT BE HELD RESPONSIBLE FOR:

1. **IMPROPER INSTALLATION OF ANCHORING DEVICES.**
2. **INSTALLATION INTO AGED OR UNSOUND CONCRETE BLOCK OR OTHER WALL OR FLOOR MATERIAL, WHICH MAY RESULT IN PREMATURE PRODUCT WEAR, PRODUCT FAILURE, PROPERTY DAMAGE, OR PERSONAL INJURY.**

SUGGESTED MOUNTING METHODS:

(A) CONCRETE BLOCK, BRICK WALL, OR PRECASTED CONCRETE:

Use 3/8" x 1-7/8" expansion anchors. Use through bolt fastening if anchors will not hold – 3/8" threaded rod is recommended (supplied by other).

(B) METAL SIDING ON BUILDING OR METAL WALL BUILDING:

Through bolt fastening as above (supplied by others). Use a back up plate (steel or wood) to support bolts. Another alternative is to use wood lags with back plate from inside building to back of seal.

1. READ INSTRUCTIONS THROUGH COMPLETELY BEFORE INSTALLATION:

2. MEASURE DOOR TO ENSURE PROPER DIMENSIONS:

3. REVIEW PARTS LIST TO ENSURE ALL PARTS HAVE BEEN SUPPLIED:

4. DETERMINE CENTERLINE OF DOOR OPENING AND HEAD PAD:

Locate centerline of door opening and mark on dock floor. Take 1/2 the head pad width and mark the distance on both sides of the door centerline.

This will determine: (a) The inside position of the vertical pads.

(b) The position of the galvanized hood.

5. MOUNT TRACK TO VERTICAL PADS:

Before starting please note:

The bottom of the vertical pad is signified by a taper cut with accompanying air holes. At the notched portions of the vertical pads, fasten the track using No. 14 Wood Screws.

6. ATTACH MOUNTING BRACKETS TO VERTICAL PADS:

Fasten three galvanized steel flat brackets, using no. 14 wood screws, to outside perimeter of each vertical pad. Fasten two galvanized steel angle brackets to the inside perimeter of each vertical pad, using no. 14 wood screws (See Flat & Angle Bracket Mounting Detail).

Note: Final location of the brackets to be determined by the installer to suit spacing of the mortar joints or other wall configurations. Common location of brackets is one at center and one 12" from end.

7. POSITION VERTICAL PADS:

The inside dimension of the vertical pads should be the same as the width of the head pad. The bottom of the wood backing of the vertical pads should be even with the dock floor or at the top of "above dock bumpers" on low docks. Vertical pads must be plumb from top to bottom

Note: Location of the vertical pads should be checked in order to ensure proper adjustable head pad location. Head pad should move freely in between vertical pads.

8. MOUNT VERTICAL PADS TO WALL:

Once the vertical pad is in position, drive a 3/8" sleeve anchor bolt (See #5) through the upper and lower brackets. Once complete, repeat for remaining vertical pad(s).

9. MOUNT HEADER ASSEMBLY / HEADER PAD ASSEMBLY:

- (A) Carefully remove staples from head pad to unfold curtain.
- (B) Place the 2" roller assembly (#13) in the LHR bracket (#17) on the head pad.
- (C) Drop the head pad down from the top allowing the rollers to be placed into the track. Make sure logo is right side up.
- (D) Insert spring assembly through head plate (See Detail A). Place notched side of spring assembly on the left viewing side.
- (E) Using the weld line on the torsion spring assembly tube, tape loose curtain to spring assembly being certain that it is brought up between the wall and the spring assembly.
- (F) Wind the torsion spring assembly by turning the shaft in a downward direction away from the wall until the follower curtain is tightened.

Insert two screw drivers in holes of torsion spring. Using a ratchet type motion, bring head pad up to a full open position. Once the head pad is in the fully opened position, increase the tension of the spring by two **FULL** turns.

Holding this position, push the head pad down manually and release. Repeat this procedure until the head pad comes up to the full open position.

- (G) Once the desired position of the head pad is reached, insert a 4" bolt in the holes provided on both sides to prevent the shaft from turning down.
- (H) Install the canopy over the spring assembly.
- (I) Install the screw hook on the door jamb (one on each side). Proper hook location is determined by pulling the head pad down to as far as it will go (See #16 and Back view).

10. CAULK BETWEEN TOP OF CANOPY AND WALL: A silicone caulking is recommended.

IMPORTANT

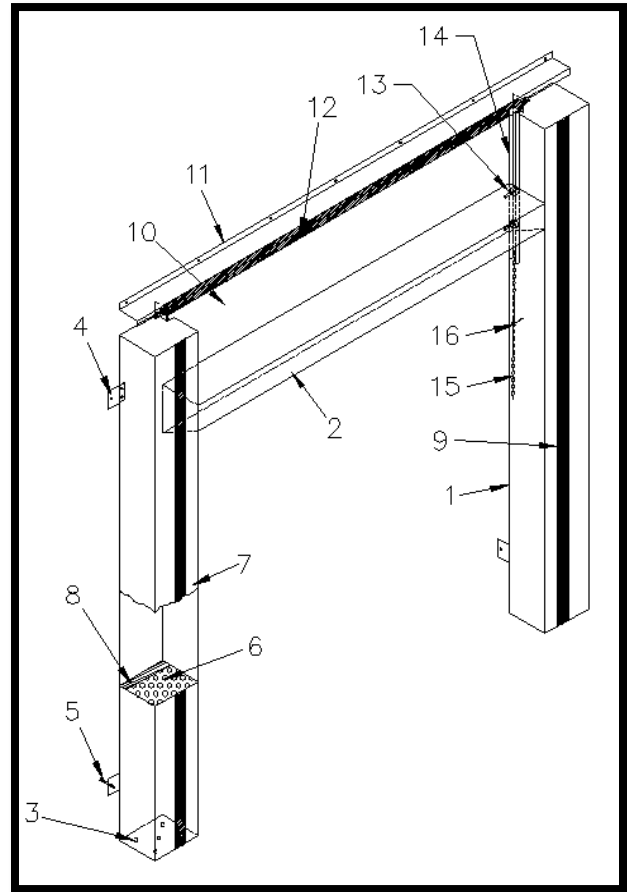
- TRUCKS SHOULD NOT BE PERMITTED TO BACK INTO THE SEAL TO A DEPTH ANY GREATER THAN 3" TO GAIN MAXIMUM LIFE OF THE DOCK SEAL.
- THE ADJUSTABLE HEADER SEAL MUST BE AT ITS MAXIMUM HEIGHT WHEN VEHICLES ARE BACKING INTO THE DOOR OPENING. AFTER THE VEHICLE IS IN POSITION, DRAW THE HEADER SEAL DOWN TO THE TOP OF THE VEHICLE.
- VEHICLES MUST BACK UP PERPENDICULAR TO THE DOCK SEAL.

PACKING LIST

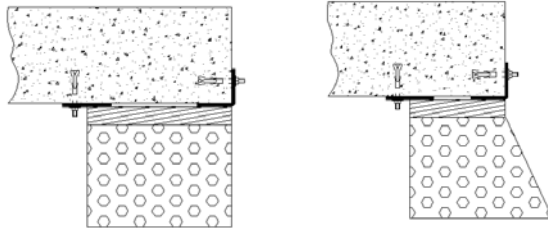
PART	QUANTITY	PART	QUANTITY
VERTICAL PAD	2	ROLLER ASSEMBLY	4
ADJUSTABLE HEAD PAD	1	GALVANIZED STEEL TRACK	2
GALVANIZED STEEL MOUNTING BRACKETS – ANGLE BRACKETS	6	PULL CHAIN	2
GALVANIZED STEEL MOUNTING BRACKETS – FLAT BRACKETS	6	SCREW HOOK	2
3/8" X 1-7/8" SLEEVE ANCHOR BOLTS	17	WOOD SCREW	46
HEADER ASSEMBLY	1	4" BOLT	2
TORSION SPRING ASSEMBLY	1		

BILL OF MATERIALS

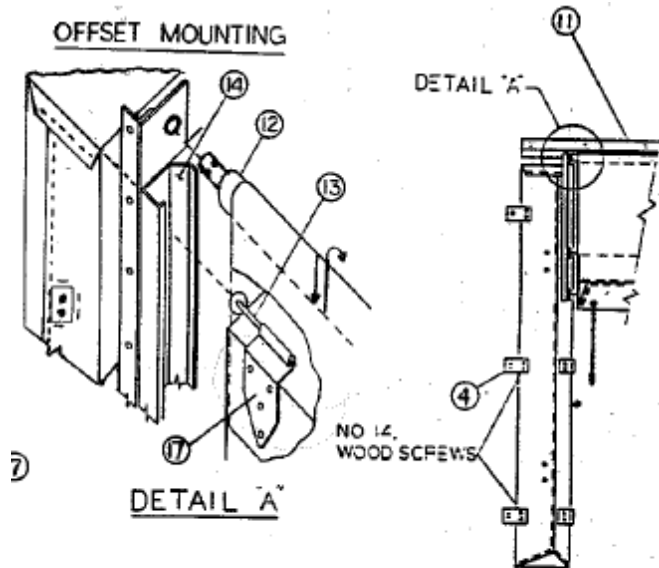
1. VERTICAL PAD
2. ADJUSTABLE HEAD PAD
3. AIR HOLES
4. GALVANIZED STEEL MOUNTING BRACKETS
5. 3/8" SLEEVE ANCHOR BOLTS
6. POLYURETHANE FOAM CORE.
7. COVER FABRIC
8. PRESSURIZED WOOD BACKING
9. 4" WIDE FULL GUIDE STRIPE
10. HEADER FOLLOWER CURTAIN
11. HEADER ASSEMBLY
12. TORSION SPRING ASSEMBLY
13. ROLLER ASSEMBLY
14. GALVANIZED STEEL TRACK
15. PULL CHAIN
16. SCREW HOOK
17. LHR BRACKET



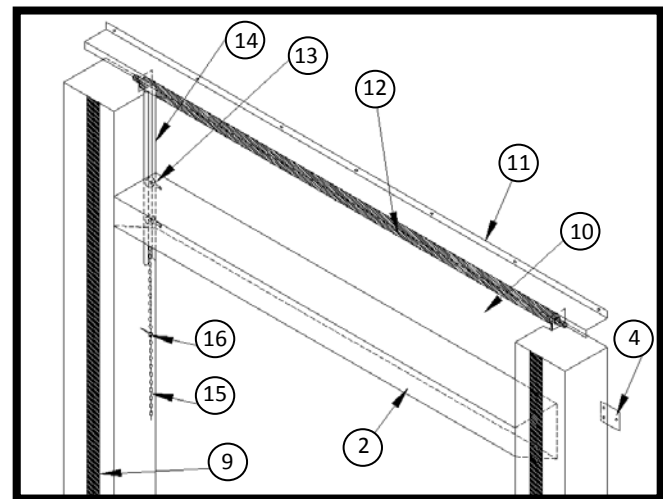
FRONT VIEW



**CUBED BEVELLED
FLAT & ANGLE BRACKET MOUNTING**



BACK VIEW



BACK VIEW