



Model 885 ADV-X

WAYNE DALTON COMMERCIAL DOORS

- MODEL 881 ADV-X Interior High Speed Fabric Door
- MODEL 882 ADV-X Strutted Interior High Speed Fabric Door
- MODEL 883 ADV-X Strutted Exterior High Speed Fabric Door
- MODEL 884 ADV-X Strutted Exterior Heavy-Duty High Speed Fabric Door
- MODEL 885 ADV-X Extreme Exterior High Speed Rubber Door

ADV-X High Speed Rolling Doors

Patent-Pending Designs

- Curtain lock construction on Model 881 makes doors field repairable unlike zipper doors
- Articulating roller windlock on Model 884 allows door to operate under heavy wind conditions

Fast-Acting

- Full open position in four seconds or less*
- Adjustable timer to close delay

High Cycle Design

- Springless design requires minimal interruption for maintenance
- Direct-mounted eliminates chain and sprocket maintenance
- Variable frequency drive eliminates sudden jolts and reduces door wear and tear

Safety Features

- Limit lock technology prevents door from losing limit during a power outage
- In-plane primary and secondary infrared sensors
- Wireless reversing edge
- Break-away design with self repair
- Built-in service reminder
- Padlockable disconnect at controller
- Advanced gearbox design features door stop safety device

* Depending on door model and size



5-Year Limited Warranty

Attributes	Model 881 ADV-X	Model 882 ADV-X	Model 883 ADV-X	Model 884 ADV-X	Model 885 ADV-X
Application	Interior	Interior	Exterior	Exterior	Exterior
Maximum width	14'	16'	16'	24'	30'
Maximum height	14'	15'	15'	18' at 24' wide or 20' at 23' wide	30'
Opening speed	Up to 70"/sec	Up to 65"/sec	Up to 65"/sec	Up to 55"/sec	Up to 50"/sec
Closing speed	Up to 40"/sec	Up to 40"/sec	Up to 40"/sec	Up to 40"/sec	Up to 40"/sec
Certified air tightness*	< 0.236 cfm/sq ft	Not available	Not available	Not available	Not available
Curtain lock	Yes	Not available	Not available	Not available	Yes
Break-away self reset	Yes	Yes	Yes	Yes	Yes
Pressure/ wind resistance**	Up to 7.5 PSF or 90 MPH	Up to 4.0 PSF or 76 MPH	Up to 4.0 PSF or 76 MPH	Up to 22.0 PSF or 158 MPH	Up to 27.0 PSF or 180 MPH
Operational pressure***	Up to 2.5 PSF or 53 MPH	Up to 2.5 PSF or 53 MPH	Up to 2.5 PSF or 53 MPH	Up to 5.0 PSF or 75 MPH	Up to 5.0 PSF or 75 MPH
Wind strut	Not Available	1" Strut Standard	1" Strut Standard	4" articulating roller wind strut	Not Available
Door panel	2 layers of PVC-coated polyester with 1 layer of polyester weave	2 layers of PVC-coated polyester with 1 layer of polyester weave	3 layers of PVC-coated polyester with 2 layers of polyester weave	3 layers of PVC-coated polyester with 2 layers of polyester weave	5 layers of NBR Rubber with 4 layers of polyester weave
Vision	20" high windows spaced evenly across width of door	20" high windows spaced evenly across width of door	20" high windows spaced evenly across width of door	20" high windows spaced evenly across width of door	10" x 20" windows (maximum quantity depending on door size)
Operation	Direct drive motor and gearbox system with a door stop device	Direct drive motor and gearbox system with a door stop device	Direct drive motor and gearbox system with a door stop device	Direct drive motor and gearbox system with a door stop device	Direct drive motor and gearbox system with a door stop device
Control	Variable frequency drive NEMA 4X cULus listed Onboard self diagnostic and service reminder Built-in padlockable field disconnect	Variable frequency drive NEMA 4X cULus listed Onboard self diagnostic and service reminder Built-in padlockable field disconnect	Variable frequency drive NEMA 4X cULus listed Onboard self diagnostic and service reminder Built-in padlockable field disconnect	Variable frequency drive NEMA 4X cULus listed Onboard self diagnostic and service reminder Built-in padlockable field disconnect	Variable frequency drive NEMA 4X cULus listed Onboard self diagnostic and service reminder Built-in padlockable field disconnect
Obstruction detection	Infrared sensors mounted in-plane to the door curtain at 18" and 50"- 54" from floor	Infrared sensors mounted in-plane to the door curtain at 18" and 50"- 54" from floor	Infrared sensors mounted in-plane to the door curtain at 18" and 50"- 54" from floor	Infrared sensors mounted in-plane to the door curtain at 18" and 50"- 54" from floor	Infrared sensors mounted in-plane to the door curtain at 6" and 50"- 54" from floor
Reversing safety edge	Wireless reversing edge	Wireless reversing edge	Wireless reversing edge	Wireless reversing edge	Wireless reversing edge
Electrical availability	120V AC 1PH, 230V AC 1PH, 230V AC 3PH, 460V AC 3PH, 575V AC 3PH	120V AC 1PH, 230V AC 1PH, 230V AC 3PH, 460V AC 3PH, 575V AC 3PH	120V AC 1PH, 230V AC 1PH, 230V AC 3PH, 460V AC 3PH, 575V AC 3PH	230V AC 3PH 460V AC 3PH 575V AC 3PH	230V AC 3PH 460V AC 3PH 575V AC 3PH

* Air tightness is independently tested to ASTM E283 test standard.

** Pressure/wind resistance value is the ultimate pressure tested at door width of 10' for 881, 16' for 882/883, 20' for 884, and 19' for 885. The MPH is determined in accordance to ASCE 7-10 EXP B.

***Operational pressure value is the pressure tested up to 100,000 cycles at door width of 10' for 881, 16' for 882/883, 24' for 884, and 19' for 885.

Model 881 ADV-X – Interior High Speed Fabric Door

Economical and versatile, the Model 881 ADV-X is designed to be used indoors in high traffic and environmentally-controlled areas.

- Independently tested airtight design – Prevents airborne contaminants from entering a controlled environment and reduces air exchange to no higher than .236 cfm/sf (ASTM E-283)
- Strutless design – Lowers the operational noise of the door for quiet and smooth operation
- High pressure resistance (independently tested)– Capable of withstanding pressure of up to 7.5 PSF or 90 MPH (ASCE 7-10 EXP B)
- Patent-pending curtain lock – Allows door to be easily repaired

Standard Features

- Max width – 14'
- Max height – 14'
- Opening speed – Up to 70"/second
- Closing speed – Up to 40"/second
- Pressure resistance – Up to 7.5 PSF or 90 MPH
- Operational pressure – Up to 2.5 PSF or 53 MPH
- Door panel – 2 layers of PVC-coated polyester with 1 layer of polyester weave (wash durable)
- Built-in door stop device
- Obstruction detection – 2 sets of in-plane infrared sensors mounted 18" and 50"-54" from floor
- Reversing edge – Wireless sensing edge
- Motor – Direct-mounted gear drive
- Control panel – 1-Phase or 3-Phase NEMA 4X variable frequency drive door and motor controller with on-board diagnostic and service reminder
- Plug and play wiring
- Warranty – 5-Year Limited

Door Options

- 20" high windows spaced evenly across width of door
- Power availability – 120V AC 1PH, 230V AC 1PH, 230V, AC 3PH, 460V AC 3PH, 575V AC 3PH
- Multiple actuation options – push button, motion detector, radio control, key switch, pull switch, loop detector, treadle switch
- Signaling devices – red/green LED warning light, horn/strobe combination, rotating warning light

Color Options



Red



Blue



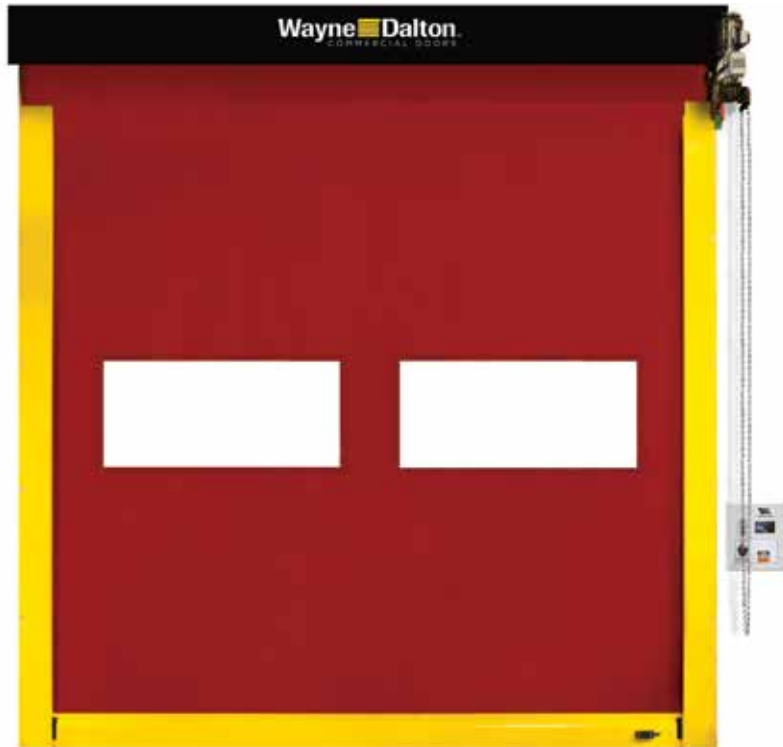
Gray



Black

Standard color for guides, brackets, struts and bottom bar is yellow. 197 optional RAL powder coat colors are available.

Actual colors may vary from brochure due to fluctuations in the printing process. Always request a color sample from your Dealer for accurate color matching.



Model 882 ADV-X – Strutted Interior High Speed Fabric Door

Model 882 ADV-X is designed to be quick and durable, making it ideal for manufacturing, warehouses and distribution facilities.

- Strutted design – Allows for quick section replacement while reducing curtain deflection under pressure

Standard Features

- Max width – 16'
- Max height – 15'
- Opening speed – Up to 65"/second
- Closing speed – Up to 40"/second
- Pressure resistance – Up to 4.0 PSF or 76 MPH
- Operational pressure – Up to 2.5 PSF or 53 MPH
- Wind strut – 1" strut
- Door panel – 2 layers of PVC-coated polyester with 1 layer of polyester weave
- Built-in stop device
- Obstruction detection – 2 sets of in-plane infrared sensors mounted 18" and 50"-54" from floor
- Reversing edge – Wireless sensing edge
- Motor – Direct-mounted gear drive
- Control panel – 1-Phase or 3-Phase NEMA 4X variable frequency drive door and motor controller with on-board diagnostic and service reminder
- Plug and play wiring
- Warranty – 5-Year Limited



Door Options

- 20" high windows spaced evenly across width of door
- Power availability – 120V AC 1PH, 230V AC 1PH, 230V, AC 3PH, 460V AC 3PH, 575V AC 3PH
- Multiple actuation options – push button, motion detector, radio control, key switch, pull switch, loop detector, treadle switch
- Signaling devices – red/green LED warning light, horn/strobe combination, rotating warning light

Color Options



Red



Blue



Gray



Black

Standard color for guides, brackets, struts and bottom bar is yellow. 197 optional RAL powder coat colors are available.

Actual colors may vary from brochure due to fluctuations in the printing process. Always request a color sample from your Dealer for accurate color matching.

ADV-X HIGH SPEED DOORS

Model 883 ADV-X – Strutted Exterior High Speed Fabric Door

Model 883 ADV-X is designed for applications where a fast-acting door is needed.

- Rugged fabric construction is ideal for exterior applications
- Strutted design – Allows for quick section replacement while reducing curtain deflection under pressure

Standard Features

- Max width – 16'
- Max height – 15'
- Opening speed – Up to 65"/second
- Closing speed – Up to 40"/second
- Wind resistance – Up to 4.0 PSF or 76 MPH
- Operational pressure – Up to 2.5 PSF or 53 MPH
- Wind strut – 1" strut
- Door panel – 3 layers of PVC-coated polyester.
2 layers of polyester weave
- Built-in stop device
- Obstruction detection – 2 sets of in-plane infrared sensors mounted 18" and 50"-54" from floor
- Reversing edge – Wireless sensing edge
- Motor – Direct-mounted gear drive
- Control panel – 1-Phase or 3-Phase NEMA 4X variable frequency drive door and motor controller with on-board diagnostic and service reminder
- Plug and play wiring
- Warranty – 5-Year Limited

Door Options

- 20" high windows spaced evenly across width of door
- Power availability – 120V AC 1PH, 230V AC 1PH, 230V, AC 3PH, 460V AC 3PH, 575V AC 3PH
- Multiple actuation options – push button, motion detector, radio control, key switch, pull switch, loop detector, treadle switch
- Signaling devices – red/green LED warning light, horn/strobe combination, rotating warning light

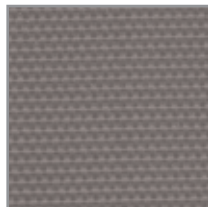
Color Options



Red



Blue



Gray



Orange

Standard color for guides, brackets, struts and bottom bar is yellow. 197 optional RAL powder coat colors are available.



Actual colors may vary from brochure due to fluctuations in the printing process. Always request a color sample from your Dealer for accurate color matching.

Model 884 ADV-X – Strutted Exterior Heavy-Duty High Speed Fabric Door

The heaviest fabric door in the ADV-X series, the Model 884 ADV-X is designed for exterior applications where weather elements may be extreme.

- Heavy-duty construction – rugged curtain construction with articulating wind struts with end rollers designed for high pressure resistance while minimizing operational noise and allowing for operation during windy conditions
- Strutted design – Patent-pending articulating roller wind strut reduces noise and allows for quick panel replacement, minimizing facility downtime

Standard Features

- Max width – 24'
- Max height – 18' at 24' wide or 20' at 23' wide
- Opening speed – Up to 55"/second
- Closing speed – Up to 40"/second
- Wind resistance – Up to 22 PSF or 158 MPH
- Operational pressure – Up to 5 PSF or 75 MPH
- Wind strut – 4" articulating strut with patent pending roller windlock
- Door panel – 3 layers of PVC-coated polyester with 2 layers of polyester weave
- Built-in stop device
- Obstruction detection – 2 sets of in-plane infrared sensors mounted 18" and 50"-54" from floor
- Reversing edge – Wireless sensing edge
- Motor – Direct-mounted gear drive
- Control panel – 3-Phase NEMA 4X variable frequency drive door and motor controller with on-board diagnostic and service reminder
- Plug and play wiring
- Warranty – 5-Year Limited

Door Options

- 20" high windows spaced evenly across width of door
- Power availability – 230V, AC 3PH, 460V AC 3PH, 575V AC 3PH
- Multiple actuation options – push button, motion detector, radio control, key switch, pull switch, loop detector, treadle switch
- Signaling devices – red/green LED warning light, horn/strobe combination, rotating warning light

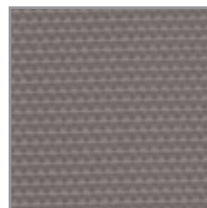
Color Options



Red



Blue



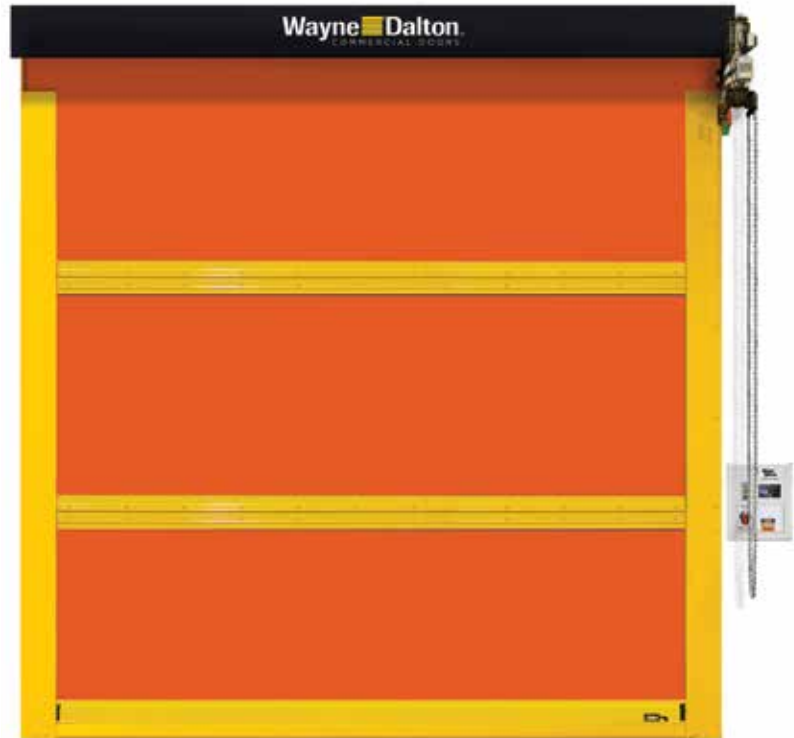
Gray



Orange

Standard color for guides, brackets, struts and bottom bar is yellow. 197 optional RAL powder coat colors are available.

Actual colors may vary from brochure due to fluctuations in the printing process. Always request a color sample from your Dealer for accurate color matching.



ADV-X HIGH SPEED DOORS

Model 885 ADV-X Extreme Exterior High Speed Rubber Door

Made with a special reinforced rubber, Model 885 ADV-X is our toughest high speed door, perfect for large exterior openings or applications with extreme environment conditions.

- Tough construction – 5 layers of reinforced rubber curtain construction provides added strength without the weight
- Exterior environments – Ideal for harsh exterior conditions with an operational wind load up to 5 PSF at 20' wide or 75 MPH (ASCE 7-10 EXPB)

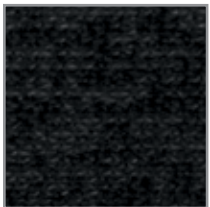
Standard Features:

- Max width – 30'
- Max height – 30'
- Opening speed – Up to 50"/second
- Closing speed – Up to 40"/second
- Wind resistance – Up to 27 PSF or 180 MPH
- Continuous windlock
- Operational pressure – Up to 5 PSF or 75 MPH
- Door panel – 5 layers of NBR rubber with 4 layers of polyester weave
- Built-in stop device
- Obstruction detection – 2 sets of in-plane infrared sensors mounted 6" and 50"-54" from floor
- Reversing edge – Wireless sensing edge
- Motor – Direct-mounted gear drive
- Control panel – 3 Phase NEMA 4X variable frequency drive door and motor controller with on-board diagnostic and service reminder
- Plug and play wiring
- Warranty – 5-Year Limited

Door Options

- 20" high windows spaced evenly across width of door
- Power availability – 230V, AC 3PH, 460V AC 3PH, 575V AC 3PH
- Multiple actuation options – push button, motion detector, radio control, key switch, pull switch, loop detector, treadle switch
- Signaling devices – red/green LED warning light, horn/strobe combination, rotating warning light

Color Options

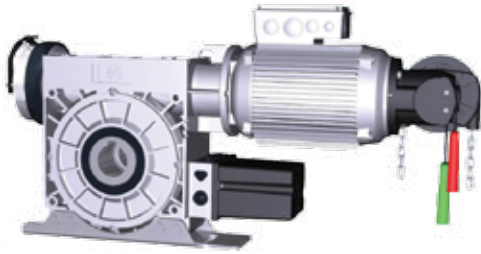


Black

Standard color for guides, brackets, struts and bottom bar is yellow. 197 optional RAL powder coat colors are available.

Actual color may vary from brochure due to fluctuations in the printing process. Always request a color sample from your Dealer for accurate color matching.





Direct Drive Motor

Advanced gearbox design features door stop safety device and gear teeth specifically designed to spread the drive and shock loads over a larger tooth contact area for reduced maintenance costs and increased durability



3-Phase NEMA 4X Control Panel

- On-board self diagnostic capabilities
- Built-in service reminder
- Ten programmable inputs and five programmable outputs
- Padlockable fused disconnect



1-Phase NEMA 4X Control Panel

- On-board self diagnostic capabilities
- Works with 120V AC and 230V AC 1-Phase power source
- Eight programmable inputs and two programmable outputs



Patent-Pending Curtain Lock (Model 881 only)

Our patent-pending curtain lock design enables doors to be repaired quickly and in the field, unlike zippered doors.



Articulating Roller Wind Strut (Model 884 only)

Our patent-pending articulating roller wind strut enables doors to have operational wind load rating.



Reversing Edge

All Wayne Dalton high speed doors feature a wireless soft bottom edge designed to retract minimum contact load.



Obstruction Detection

Each door features two in-plane infrared sensors, placed at the bottom and partway up the door, minimizing contact with objects in the doorway.

FOR TECHNICAL INFORMATION, VISIT WWW.WAYNE-DALTON.COM/COMMERCIAL

Architect Resource Center

www.wayne-dalton.com/commercial

Go to www.wayne-dalton.com/commercial and click on the Architect Resource Center. Here you will quickly find all of the specifications, drawings and documents you need to complete your project.



DISTRIBUTED BY: