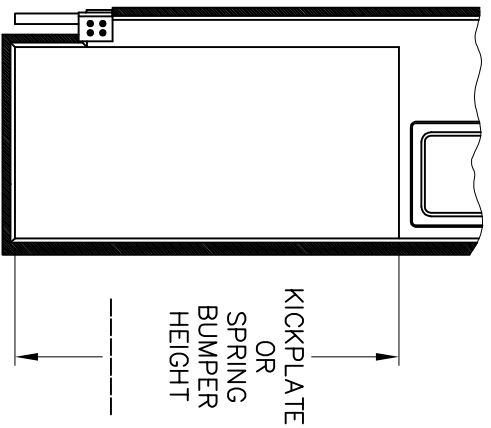
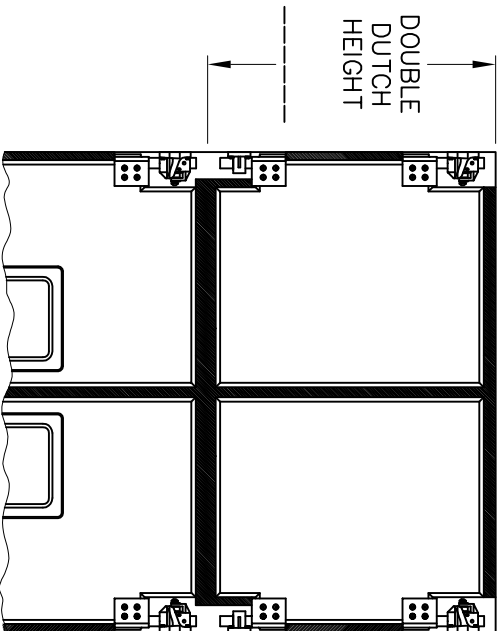


- 1 - TOP HINGE ASSEMBLY
 - 2 - BOTTOM HINGE ASSEMBLY
 - 3 - 1/8" THICK "TUFF PLAS" PANEL
 - 4 - 1/8" THICK SEALED DOUBLE THERMOPLANE SAFETY WINDOW
 - 5 - PVC DOOR FRAME c/w GASKETING
 - 2 - 1 1/2" THICK POLYURETHANE FOAM INSULATION
- *** RECOMMENDED FRAMING REQUIREMENTS:
 1/4" THICK x 4" WIDE FACE STEEL FRAME MOUNTED
 TO A SOLID FOUNDATION.



KICKPLATE OR SPRING BUMPER



DOUBLE DUTCH

DOOR OPENING:

_____ W x _____ H

DOUBLE SINGLE

COLOR = _____

QUANTITY: _____

OPTIONS

(CHECK BOX IF APPLICABLE)

- 5/16" THICK HDP SPRING BUMPERS
 (UP TO 42" HIGH)

- 1/8" THICK "TUFF PLAS" KICKPLATES
 (UP TO 48" HIGH)

COLOR = _____

- DOUBLE DUTCH

- DOOR STOP

- 12" TOP CANE BOLT ASSEMBLY

- 46" BOTTOM CANE BOLT ASSEMBLY

- PROTECTIVE BOLLARDS

24" 36"

- 90° FLOOR-MOUNT JAMB GUARDS

- 90° JAMB-MOUNT JAMB GUARDS

- 90°-135° JAMB-MOUNT

JAMB GUARDS

- 90°-135° WIDE ANGLE HINGE

- CHAIN LOCKING COLLAR

- EXTENSION "J" BRACKETS

- HOLD OPEN DEVICE

- SPRING ASSISTED HINGE



SERIES 4300 - MODEL 4301
 RIGID INSULATED IMPACT DOOR

DATE: NOV-23-04 SCALE: 1:24

DRAWN: GK,OC DWG NO: L4301-A

S.S. QUOTE REF. # _____
 CUSTOMER _____
 APPROVED BY: _____
 P/O No.: _____
 DATE: _____