

## Model 800 Slat Profiles

No. 4 Slat Profile



**Standard:**

- Curved slat, 22-gauge steel

**Available:**

- Up to 16-gauge steel
- Up to 18-gauge stainless steel
- Up to 14-gauge aluminum

Pitch\*: 2.76"

No. 14 Slat Profile – Secur-Vent®



**Available:**

- Perforated slat with 1/16" diameter holes
- 20-gauge steel or stainless steel
- Offers 20-25% open area over slat
- Up to 22' wide by 20' high door size

Pitch\*: 2.45"

No. 14 Slat Profile



**Standard:**

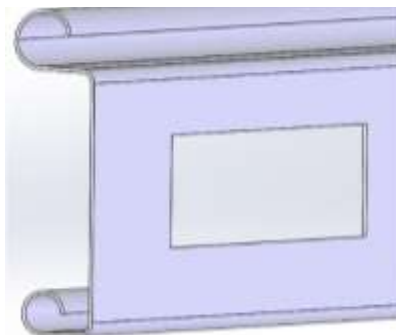
- Flat slat, 22-gauge steel

**Available:**

- Up to 16-gauge steel
- Up to 18-gauge stainless steel
- Up to 14-gauge aluminum (mill, clear, or bronze anodized)

Pitch\*: 2.45"

No. 14 Slat Profile – Ventilated



**Available:**

- Ventilated (fenestrated) flat-faced slat with 5" x 3/4" rectangular holes evenly spaced across slat; or per spec
- Offers 16.5 to 17% open area over slat
- Max of 20 ventilated slats per curtain
- 20 psf maximum
- 22, 20 or 18-gauge steel or stainless steel
- Vision lites

Pitch\*: 2.45"

\*Pitch is the distance between the top and bottom rotations of the slat (articulation distance).

## Model 800 Slat Profiles

### No. 9 Titan Oversized Slats



**Available:**

- 6" curved slat, 18-gauge primed steel
- Up to 14-gauge steel available

Pitch\*: 6.15"

\*Pitch is the distance between the top and bottom rotations of the slat (articulation distance).