

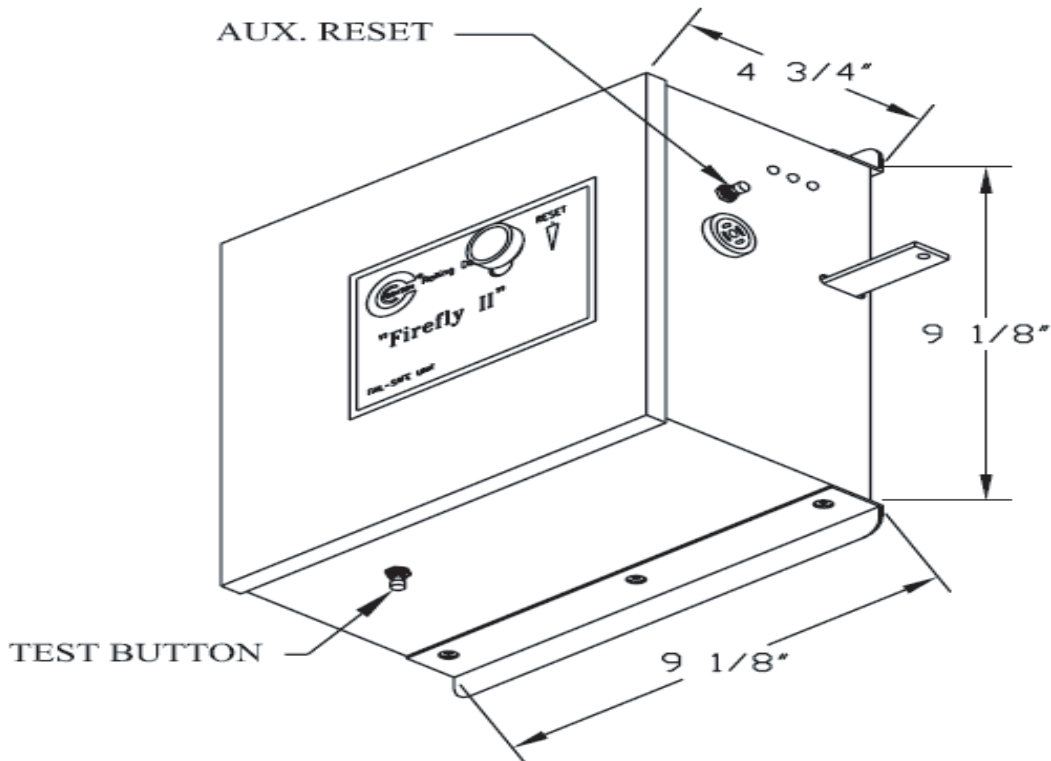
ALL-RITE

DOCK & DOOR SYSTEMS INC.

For all the “Rite” Loading Dock Solutions

FIREFLY II PLUS FIRE DOOR RELEASE DEVICE with Battery Backup

Electrical Charts



Electrical Requirements

INPUT VOLTAGE	VOLTAGE REQUIREMENTS	CURRENT REQ'D SUPERVISORY *	CURRENT REQ'D ALARM CONDITION
120VAC	120VAC ± 10%	0.10A	0.5A
24VAC	24VAC ± 10%	0.10A	0.5A
24VDC	24VDC ± 5%	0.10A	0.5A

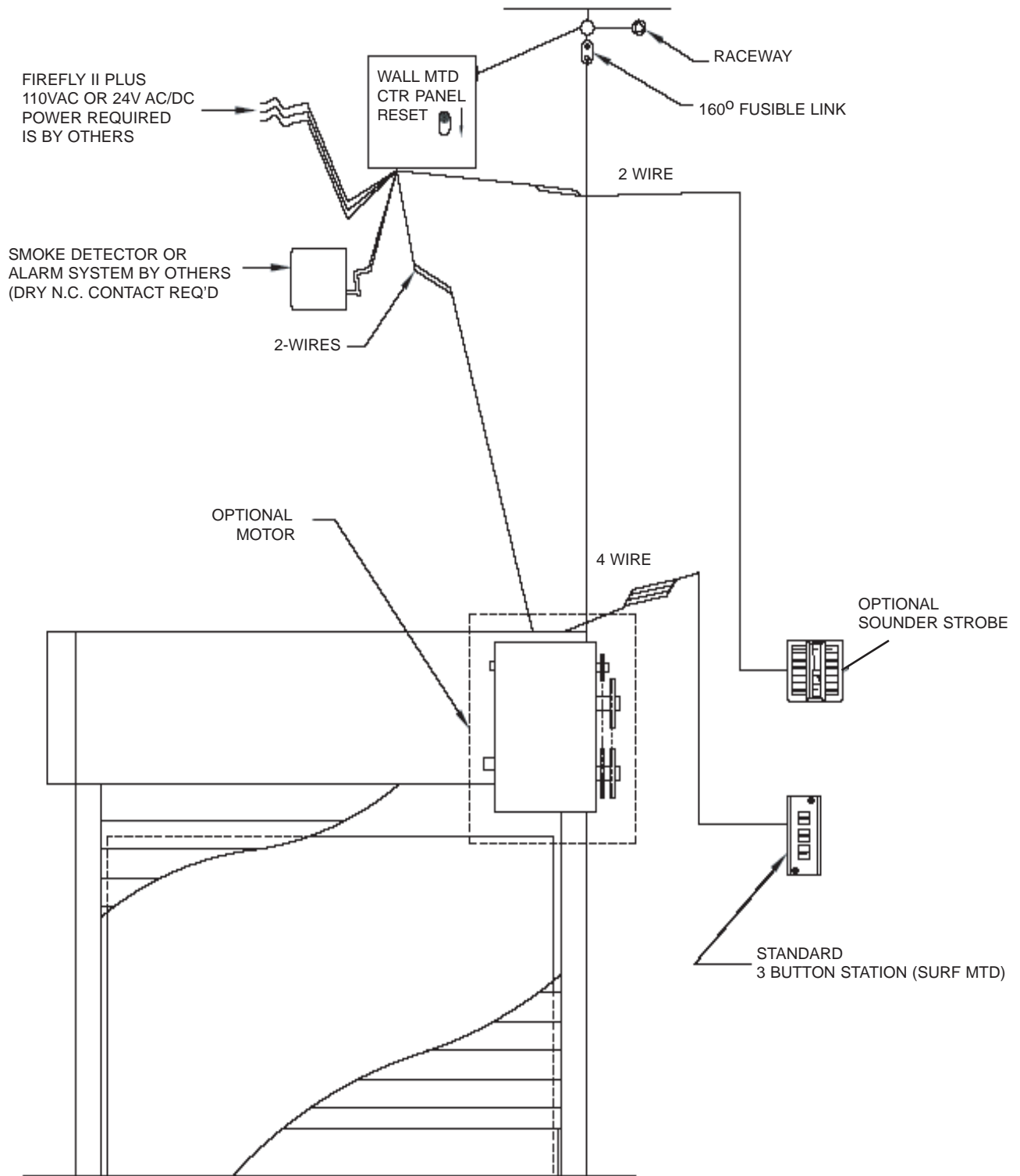
* NOTE: Initial power up in rush current not to exceed 3 times rated current

INITIATING/DOOR INPUTS (dry contacts)
Maximum loop resistance: 100 Ω
Maximum Current: Not to exceed 0.002A
Maximum Voltage: 15VDC

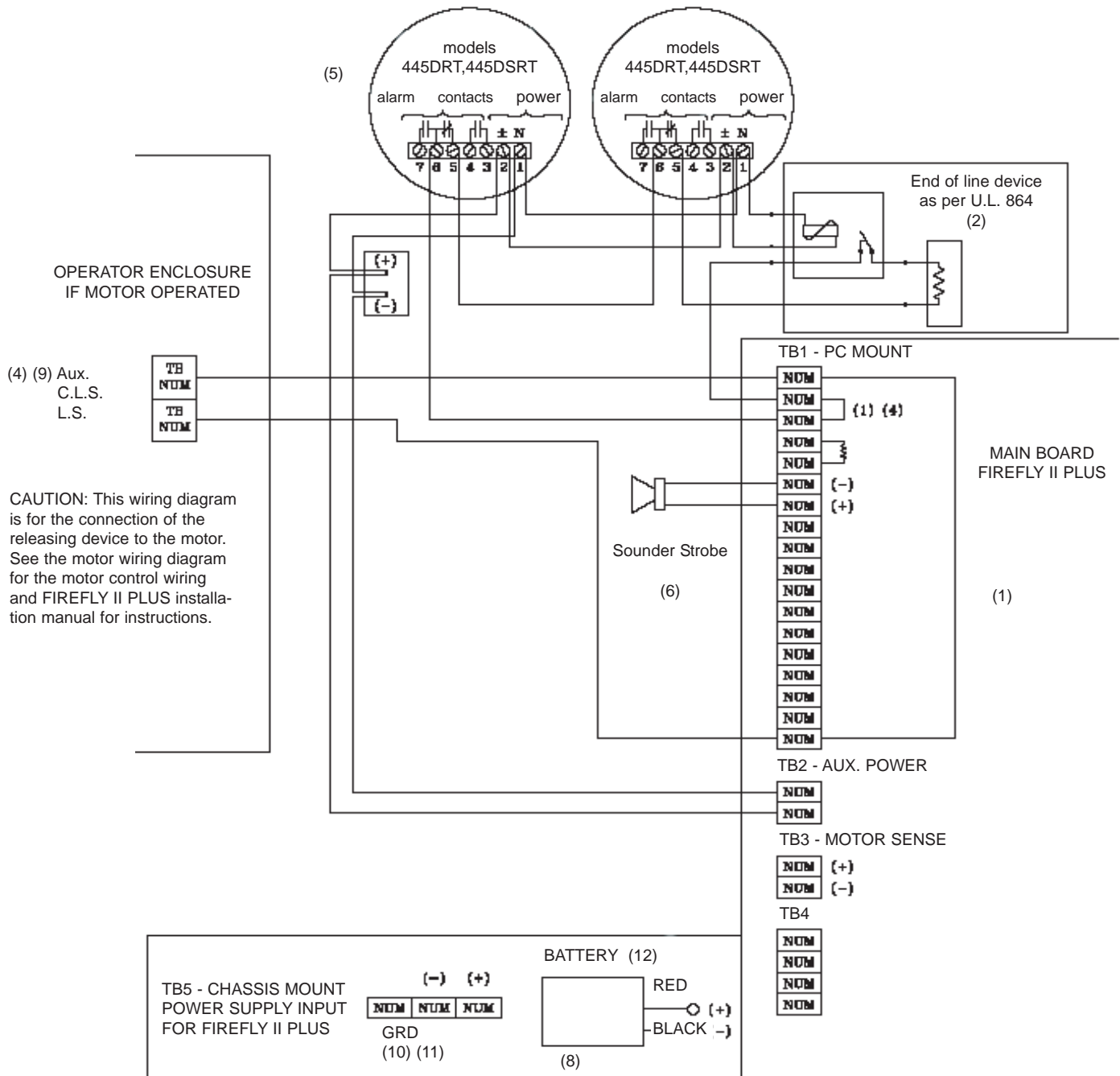
AUXILIARY INPUTS
12VDC @ 0.250A

BATTERY
12VDC 4.0 AH

FIREFLY II PLUS RELEASE DEVICE WIRING CONFIGURATION



ELECTRICAL CONN. FOR FIREFLY II PLUS MOD.TO GH/H/GJ OPERATOR



INSTALLATION INSTRUCTIONS MUST BE FOLLOWED TO ASSURE PROPER INSTALLATION

1. Factory installed jumpers: Remove when connecting to N/C alarm device
2. Supervisory device required per U.L. 864
3. All fuses 1A @ 250V, 2AG fast acting
4. Maximum loop resistance 100 ohms
5. See NFPA 80 and NFPA 72-1993 for proper placement of detector
6. If unit contains factory installed voice module option, refer to voice module connections. DO NOT connect speaker to TB1 6 & 7

7. Aux. 12VDC power for smoke detector or aux. device
8. Battery should not be connected until testing of unit is performed.
9. Aux. L.S. must be activated before operator L.S. must be dry contact.
10. Class 1 circuits must enter through proper opening.
11. Verify power source matches release device label on enclosure.
12. Battery should not be connected until testing of unit is being performed.